



# After Candlelight

Winter 2010 "Rejoice in the Lord always. I say it again; Rejoice!" Phil. 4:4

## Camp Fitch YMCA's Alumni Newsletter

### What's Inside:

- Partner of Youth now called: *Strong Kids*
- Teen trips for 2010
- Summer enrollment is open
- Monster slide = Monster fun
- New Fitch specialty camps
- New view at Mitchell Lodge

### Open House Events

April 25, 2010, 1:00-5:00 p.m.

May 16, 2010, 1:00-5:00 p.m.

Come for a Sunday afternoon of camp fun. Wagon ride tours, archery and pony rides will be some of the options available. This is a great way to introduce camp to a friend. There is no cost but plenty to do.



## Leadership Development is Our Cornerstone

Since 1914 Leadership has been the key component to the Camp Fitch mission. At the heart of our summer program, Cabent counselors are responsible for providing servant leadership that is critical to the development of each camper. Most of our leaders are home grown and have developed their skills by coming up through Camp Fitch leadership programs. All of our leaders are carefully screened, interviewed and trained in the critical components of the Camp Fitch experience.

This summer, we are taking the next step in expanding and defining our leadership development goals. The first step in the Fitch Leadership Development process will be a new program called: **Leaders in Training**. The LIT program will be a one week experience for 15 year olds with the option of an end of summer adventure trip specifically designed for the current LIT graduates. The LIT program will focus on broad leadership skills that are critical for success in all walks of life. Areas of focus will deal

with developing positive life habits, being a team player, a problem solver and a creative thinker.

The **Counselor In Training** program is for 16-17 year olds. The CIT program will build upon the LIT program and provide specific application to what it means to be a leader at Camp Fitch. This two week program provides hands on opportunities to practice these skills as an assistant with a senior counselor during the second week.

The third level is our beloved **Dish Crew**. This program is an opportunity for 17 and 18 year olds to practice their leadership skills in a very practical way. Expressing service to others by working on the dish crew is challenging, hard work and fun. Dish Crew volunteers help with evening cabin coverage when counselors are on their night off and provide lots of enthusiasm to the Camp Fitch program.

Individuals who work the Dish Crew are the first ones considered for a camp coun-



### Polar Bears Rock !

selor position. Their performance on the Dish Crew tells those of us in Camp Director positions a lot about their character and ability to be a positive role model for our campers.

This three pronged leadership program is one of many things that makes Camp Fitch YMCA one of the very best camps in the country.

Questions about these programs can be directed to Peter Heinze, Barb Olin, Greg Donahue, or Brian Rupe.

### Mark Your Calendar

Fitch Day This summer

Saturday, July 10th



*“Camp Fitch is a place where kids discover who they were meant to be”*



### Wish List

Donations you could make that would greatly enhance our ability to serve the mission of Camp Fitch. Call executive director, Brian Rupe at 814 922 3219

- Sunfish sail boat
- Funding for a horse stable
- Big sail boat for Lake Erie
- Tractor—big or small
- Aluminum canoes
- Catamaran
- Ski boat

## Attention All Teens

Come bring your friends and join us this summer for an adventure of a lifetime with camps truest and the best. The trips program is the perfect way to experience activities we are unable to offer with our traditional camp program. This summer we are taking trips down towards Ohio, Pennsylvania, Washington DC, and new this year, the western shores of Lake Erie. Also this summer, we are offering a trip exclusively for

those successfully completing the LIT program. On each trip we will sleep in tents, enjoy great activities in each region, and cook our own food for most of the meals. Our trips are designed specifically for teens ages 13-17.

Multi-Sport Adventure  
June 20-26

Whitewater/Washington DC  
Adventure – July 18-31

Lake Erie Island Hoppers  
July 4-11

LIT Trip  
August 1-7

For questions regarding our trips program contact

Rob Anderson at:  
[robanderson@campfitchymca.org](mailto:robanderson@campfitchymca.org)  
or by phone:

**814-922-3219, ext. 117**

To register for these trips visit our website at  
[www.campfitchymca.org](http://www.campfitchymca.org).  
See you this summer!

## New Decade—New Programs

Summer Camp 2010 is approaching fast and is bringing with it several new programs to offer Camp Fitch campers.

We are offering five different Sports Camps for the summer of 2010. As in the past, campers can attend our Competitive Dolphin Swim Camp led again this year by coaches Paul and Mark Riesmeyer, Soccer Camp coached by representatives of Major League Soccer and Distance Running Camp headed up for the second year by Coach Rick Wilson. New this year will be a House of Speed Camp and Girls Softball Camp.

House of Speed is an athletic training program designed to help young athletes, 8 to 14, focus on a quality necessary for

skill in all sports –speed. This program is based on the principles used by Don Beebe during his record setting career in the NFL. The program will bring to camp certified trainers, specialized equipment and a state of the art training program that will teach athletes techniques to improve running form and speed, skills to improve hand and feet quickness, jumping techniques to enhance explosiveness and methods to improve balance and coordination. Athletes in all sports will benefit from this camp.

Our brand new Girls Softball Camp will emphasize fundamentals in all aspects of softball – pitching, fielding, hitting, throwing, catching, and base running. The coaching staff of

Northwestern High School in Erie County, Pennsylvania will lead our Softball Camp. Northwestern High School is one of the top softball teams in western Pennsylvania and many coaches have called it one of the most fundamentally sound teams in the state. Girls attending softball camp will gain skills that will help them attain the next level in the game. When not involved in softball, campers will take part in the traditional camp activities. Softball Camp is held after the summer travel ball season is over.

For information on these new summer programs and all of our programs visit our website at:  
[www.campfitchymca.org](http://www.campfitchymca.org).

## The Monster Slide is Coming—Chutes and Ladders at Camp

For years, kids have been talking about a faster way to get around camp. Well – wishes come true. The summer of 2010 will have a giant enclosed slide that will take you from behind the craft shop to the boardwalk in the valley between Lake M'VIMA and the archery range. The slide will be 100

feet long and drop 52 feet - an exciting ride without a doubt! Not only fun, but conveniently placed between Boys Camp and Girls Camp this monster of a slide will become a hub for transport to the lower flat.

This slide is dry and will be used all year long. School

groups and weekend groups through out the year will be able to slip slide away.

As the slide is built and comes alive with activity, I am sure we will come up with a fitting name for our new addition. Got any great ideas? - Let us know.

## Making A difference One Camper At A Time: Building Strong Kids

Tina is a young lady from Boardman who has been a part of the 'Camp Fitch Bunch' for nine years. Four years as a camper, one year as a CIT and four years on staff. She is currently enrolled at YSU as a Special Education Major, but that is getting to far ahead in the story.

Tina is from a great and very close knit family. A family that wants all the best for their kids, but like so many folks in the Valley during these tough economic times could never afford to send their children to the shores of Lake Erie for a week of summer camp. Tina smiles as she remembers back to her childhood. She admits that she was a very quiet shy child that was comfortable being in the background. Making friends was hard for a kid who found being quiet was much more appealing then speaking up. This was all to change for Tina when she was ten years old.

Generous donors have always been a part of the landscape at Camp Fitch, particularly when it comes to

scholarships (camperships is perhaps a better word). Tina's life changed in her 10<sup>th</sup> summer because of people who wanted to make a difference. Her family applied for a campership, it was accepted and Tina was on her way to camp.

Tina discovered, as many 'city kids' do, that there is a whole new world out there. A place where you can make friends from all over, see a million stars, where trees and grass are in abundance over cement and cars and getting dirty is not only okay - it's encouraged. She was able to discover a whole other side, the shy side put aside and the gregarious side of laughing, joking, talking and making friends came out - maybe not all at once but over time.

As the summers went by, camp became a second home for Tina. A summer without camp was not even a remote possibility. She saw another side of camp and a chance to give back by becoming a staff member. A little girl who never saw herself as a leader was now learning about leadership and, lo and behold, she was good at it. She had become what she once admired in the staff - a caring role model who put kids

first.

Tina works a lot with the 'Navajo Village' which is our Special Needs camp. Now to finish off 'the rest of the story,' Tina's heart was into helping folks with special needs, so Art Strahan, a former 'Special Populations Director,' became a mentor to Tina and helped influence her into a career choice - Special Education. Tina is truly a success story for our campership program, but her story is repeated so many times by lives changed forever at Camp Fitch.

Want to help make a difference? Join our **Strong Kids** Campaign (formerly the Partner of Youth Campaign - different name / same cause). 2009 brought a record amount of camperships awarded and we are sure 2010 will rival last year as the need grows greater. Please take the time to fill out a pledge card! *Better yet please consider giving us your most valuable asset - your time. We are looking for a few good campaigners who can help spread the story.* Want to learn more please feel free to call camp or email to:

[gregdonahue@campfitchymca.org](mailto:gregdonahue@campfitchymca.org)



## Host a Camp Fitch Party and Save on Your Summer Camp Fees !

The Camp Fitch experience is for almost everyone, but a lot of families are not aware of Camp Fitch and the value it brings to a child's life. You can help us spread the word by hosting a **Camp Fitch Party** at your house.

This is how it works. You invite to your home, and have in attendance, at least five families with camper age children. One of our

Camp Fitch staff will come to your house with party food, party favors, registration information and a short presentation on Camp.

For your willingness to open up your home and to invite friends, who have never utilized Camp Fitch for a summer camp program, we will give you \$100 off of your summer camp fees.

There are a limited number of party opportunities so be sure and make your reservation soon. This program is on a first come first serve basis.

Contact Barb Olin, Greg Donahue or Brian Rupe if you are interested. 814 922 3219  
[barbolin@campfitchymca.org](mailto:barbolin@campfitchymca.org)  
[gregdonahue@campfitchymca.org](mailto:gregdonahue@campfitchymca.org)  
[brianrupe@campfitchymca.org](mailto:brianrupe@campfitchymca.org)

### FAMILY CAMP 2010

AUGUST 15-21

**SPECIAL GROUP RATES  
APPLY IF YOU RECRUIT  
NEW FAMILIES TO COME  
WITH YOU.**

**CALL FOR ADDITIONAL  
DETAILS !**

**814 922 3219**



Youngstown Ohio YMCA  
Camp Fitch Branch  
12600 Abels Rd  
North Springfield, PA 16430

Phone: 814-922-3219  
E-mail: [info@campfitchymca.org](mailto:info@campfitchymca.org)

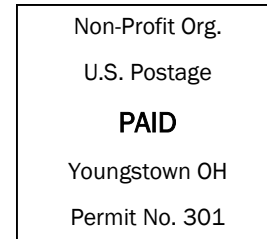
## A Great Camp on a Great Lake

---

We are on the Web

[www.campfitchymca.org](http://www.campfitchymca.org)

---



Address Service Requested

---

## 2010 Summer Camp Registration

It's winter time, which means it's the time of year that campers eagerly await the new Camp Fitch brochure to appear in their mailbox. Every year, campers have to wait until January before the new brochure arrives with the summer camp registration form

Now, campers no longer have to wait for the brochure to get registered for camp. Camp Fitch offers ONLINE REGISTRATION so campers can register any time they want! Online registration has been accepting registrations for 2010 since the beginning of October and many families have already taken advantage of it. Add those families to the campers who signed up during Early Bird registration and weeks are filling fast.

Online registration is very easy. Just go to [campfitchymca.org](http://campfitchymca.org) and click on Register for Camp Online and the prompts will guide you through. If you

registered online or made payments online last year, you still have an online account or UserName and can use it again.

Don't worry, Camp Fitch will still be mailing the 2010 brochure and it should have already arrived. Remember to get your registration in quickly so you don't get shut out of the week you want. Also, if you tell a friend about camp, you get Camp Bucks!



## Thank You Volunteers !

Several volunteer groups outdid themselves this past fall. Behind Mitchell Lodge there is a new deck overlooking Crooked Creek. What was formally hidden away is now one of the most pristine locations at camp. A stone bench was constructed by the Matt and Kelly Poese alumni weekend group and enhances the setting on Crooked Creek. Come listen to the bubbling stream and view the Steelhead Trout swimming up Crooked Creek.

**SEE YOU THIS SUMMER,  
OUR 96TH SEASON**